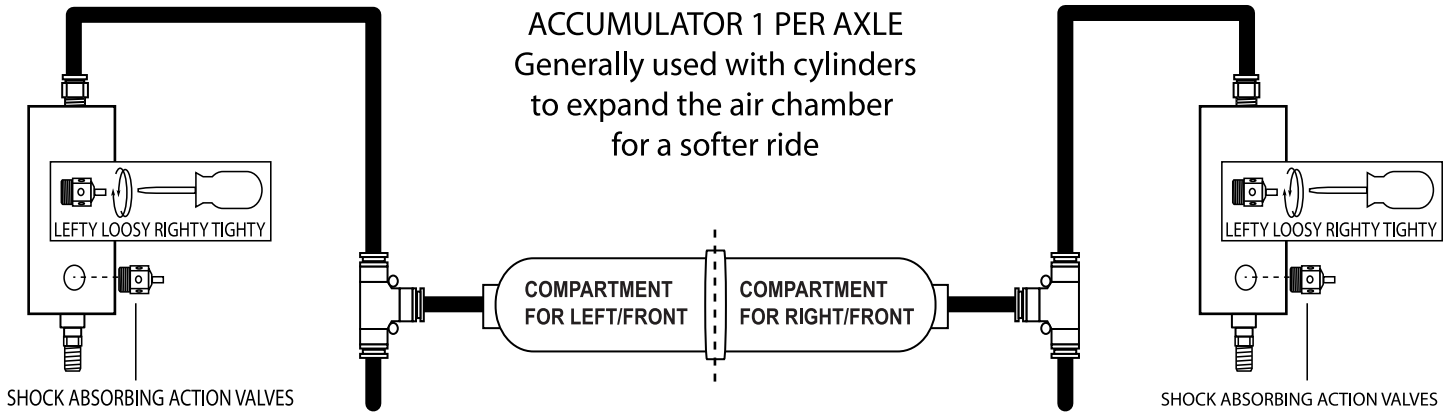




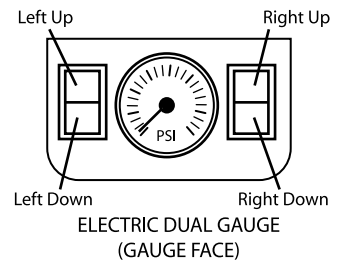
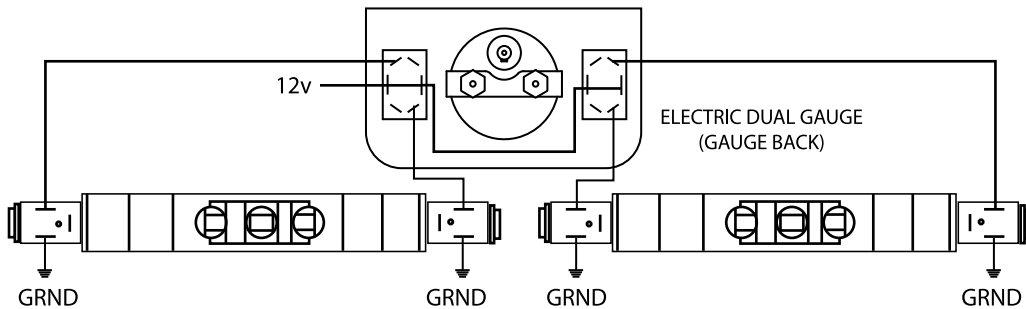
WWW.CHASSISTECH.COM

ACCUMULATOR INSTALL

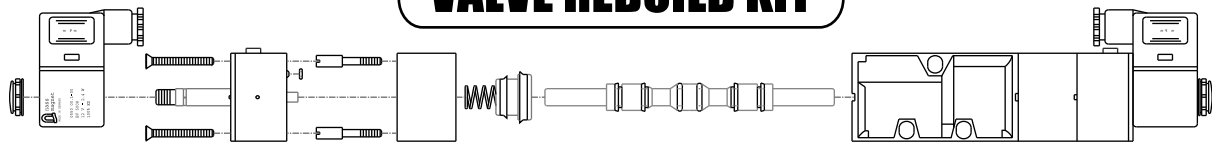
ACCUMULATOR 1 PER AXLE
Generally used with cylinders
to expand the air chamber
for a softer ride



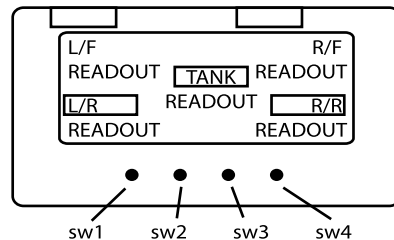
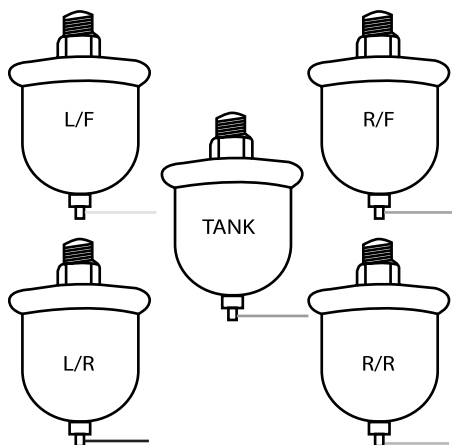
ELECTRIC GAUGE INSTALL



VALVE REBUILD KIT



DIGITAL GAUGE CONTROL INSTALL



- BLK : ground
- WHITE: unused
- GREEN: Tank Sender
- BLUE: Right Rear Sender
- BROWN: Left Rear Sender
- ORANGE: Right Front Sender
- YELLOW: Left Front Sender
- Red: Power (DC+12v)

BUTTON INSTRUCTIONS
 SW1: POSITION CHANGE BUTTON.
 SW2: SELECT HIGH AND LOW.
 SW3: SETS HIGH WARNING LIMIT.
 SW4: SETS LOW WARNING LIMIT.

WARNING SETTING INSTRUCTIONS:
 1. PRESS SW1 TO SELECT SENSOR YOU WANT TO SET.
 2. PRESS SW2 TO SELECT HIGH OR LOW LIMIT WARNING.
 3. PRESS SW3 TO INCREASE OR SW4 TO DECREASE WARNING LIMIT.
 4. PRESS SW2 TO SET ADJUSTMENT.
 5. REPEAT STEPS 1-4 IF NECESSARY.

NOTE: 300 PSI GAUGE WILL NOT GIVE ACCURATE READINGS UNDER 170 PSI. 150 PSI SENDERS MUST BE USED FOR ACCURACY UNDER 160 PSI. 300 PSI SENDERS ARE ONLY FOR USE WITH COMPRESSED GAS

CT-150 DIGITAL GAUGE INSTRUCTIONS



UNIT INCLUDES:

- Blue background Digital Gauge *1pcs
- Voltage base air pressure sender *5pcs
- Specific wires for sender *5pcs
- Wire harness *1pc
- Instruction manual

FEATURES:

- A warning feature that flashes the gauge readout when outside operation limits
- Exactly measures any position of the 4 sensors & tank air pressure
- The Air Pressure Gauge reads correctly between range of 0-10bar (max 150 psi)
- User adjustable High & Low air pressure warning setting
- High visibility full character LCD display in blue background

DISPLAY STYLE

- Digital Panel: LCD (with blue colors background)
- 5 readouts on panel individually indicates 4 corner pressures, tank air pressure in center
- Front Panel: ABS CHROME PANEL
- Case: ABS SHELL

BUTTON INSTRUCTIONS

- SW1: POSITION CHANGE BUTTON (L-F, R-F, L-R,R-R, TANK, CURRENT STATUS)
- SW2: SETS UPPER AND DOWN LIMITS (▲ ▼)
- SW3: UPPER ADJUST BUTTON(sets upper warning limit)
- SW4: DOWN ADJUST BUTTON (sets down warning limit)

LIMITED WARNING SETTING INSTRUCTIONS

- The Low and High Warning Limited Values can be set to different values. There are four buttons in front of the gauge panel which set the warning limit. The procedure for setting the warning limit is as follows:
 - Press SW1 button each time to select the sensors sequence position (L-F, R-F,L-F, R-R,TANK & CURRENT status), the display will show HIGH WARNING LIMIT
“XXX”where “XXX”is the current high pressure warning point
 - Press SW2 to select the High or Low Warning Limits (▲ ▼)
 - Press SW3 button increase the High Warning Limit Values (▼) up
 - Press SW4 button to decrease the Low Warning Limit Values (▼) down
 - Position selection sequence: L-F, R-F, L-R, R-R, TANK & Read status
 - When L-F, Low Warning Value Finished, Push SW1 to change other Positions
 - Each time the SW3 (UP) or SW4(DOWN) button are pressed the warning point will increase or decrease
 - After 10 seconds press button again. Display will recover to main view status automatically.

WIRING DESCRIPTION:

- BLACK – CONNECT TO A GOOD GROUND POINT IN THE VEHICLE
- WHITE – UNUSED
- GREEN – CONNECT TO TANK PRESSURE SENDER
- BLUE – CONNECT TO THE RIGHT- REAR PRESSURE SENDER
- BROWN – CONNECT TO THE LEFT- REAR PRESSURE SENDER

- ORANGE – CONNECT TO THE RIGHT-FRONT PRESSURE SENDER
- YELLOW – CONNECT TO THE LEFT- FRONT PRESSURE SENDER
- RED – POWER (DC+12V) CONNECT TO CAR KEY – ON ACC POSITION

AS-1 SENSOR SPECIFICATION:

1. Power supply voltage: DC12V
Wires define: Red: +12V, Black: Ground, White: Voltage Signal Output
2. Current consumption: 20mA
3. Output signal voltage: 650mV to 2300mV
4. Pressure range: 10 bar, 150 PSI
5. Accuracy resolution range: (±) 1PSI
6. Media compatibility: Clean, dry air & non-corrosive gases
7. Connector: 1/8"27 NPT Fitting Connector color: Black

DIGITAL GAUGE SPECIFICATION:

1. Reading voltage range: 650mV-2300mV
2. Supply Power: DC12V
3. Current consumption: Gauge 50mA Sender: 20mA @12V
4. Operating temperature: - 20 to 80°C
5. Reading pressure range: 0-10bar, 150 psi (max)
6. Gauge accuracy resolution: (±) 1psi
7. Backlight color: Blue

Caution: Be sure to use only the supplied, or readings will be incorrect.

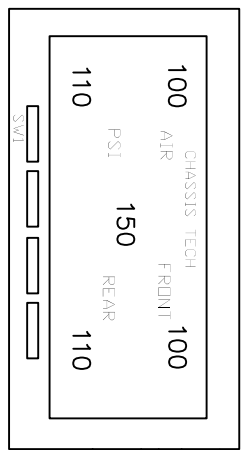
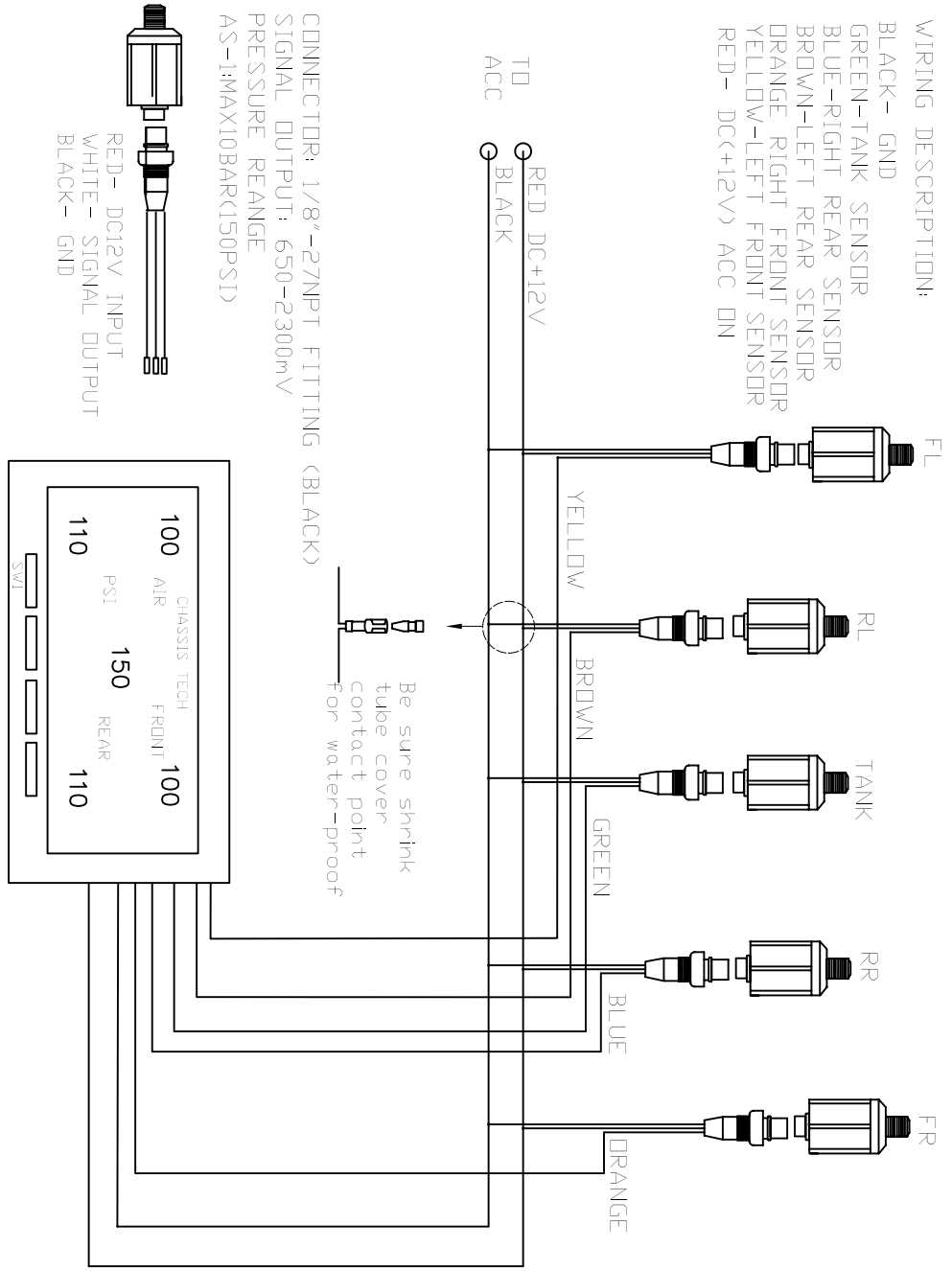
MOUNTING

- The gauge requires a rectangular cut out that is about 93mm * 60mm (3.66"* 3.94")
- It should be inserted into the opening from the front
- The gauge back shell is mounted by four poles so that the gauge is secure
- The face of the gauge is 103mm * 63mm. (4.08"* 2.48")

FACTORY INSTALL VALUES

- When connecting to the Battery without sensors connected. The digital gauge will sound 10 seconds
- The initial warning is 10 psi on the bottom limit. 160 psi on the upper limit.
- Without sensors connected each digit of panel will display "-----"
- If Gauge flashes constantly warning limits are not set properly or vehicle connected to improper air pressure.

- WIRING DESCRIPTION:
- BLACK - GND
 - GREEN-TANK SENSOR
 - BLUE-RIGHT REAR SENSOR
 - BROWN-LEFT REAR SENSOR
 - ORANGE RIGHT FRONT SENSOR
 - YELLOW-LEFT FRONT SENSOR
 - RED- DC(+12V) ACC DN



CT-300 DIGITAL GAUGE INSTRUCTIONS



THE WHOLE UNIT INCLUDES:

- With blue background Digital Gauge *1
- Voltage base air pressure sender *5pcs
- Specific wires for sender *5pcs
- Wire harness *1ps
- Instruction manual

FEATURES:

- A warning feature that flashes the gauge readout when outside operation limits
- Exact measurement of any position of the 4 sensors & tank air pressure
- The air pressure gauge will read and operate correctly between range of **0-20bar (Max 300psi)**
- User adjustable High & Low air pressure warning pressure setting
- High visibility full character LCD display in blue background

DISPLAY STYLE

- Digital Panel: LCD (with blue color background)
- 5 data shown on the panel individually indicates the 4 corner pressures, and tank air pressure in the center
- Front Panel: ABS CHROME PANEL
- Case: ABS SHELL

BUTTON INSTRUCTION

- SW1: POSITION CHANGE BUTTON
(L-F, R-F, L-R, R-R, TANK, CURRENT STATUS)
- SW2: SET UPPER AND DOWN LIMITS BOTTON(▲ ▼)
- SW3: UP ADJUST BUTTON(sets upper warning limit)
- SW4: DOWN ADJUST BUTTON (sets down warning limit)

LIMIT WARNING SETTING INSTRUCTIONS

- The Low and High Warning Limit Values can be set to different values.
- There are four buttons in front of the gauge panel which sets the warning limits. The procedure for setting the warning limit is as follows:
- Press SW1 button by each time to select the sensors sequence position (L-F, R-F, L-F, R-R, TANK & REAL status), the display will show HIGH WARNING LIMIT
“XXX” where “XXX” is the current high pressure warning point
- Press SW2 to select the High or Low Warning Limits (▲ ▼)
- Press SW3 button increase the High Warning Limit Values (▼) up
- Press SW4 button to decrease the Low Warning Limit Values (▼) down
- Position selection sequence: L-F, R-F, L-R, R-R, TANK & Original status
- When L-F, Low Warning Value is set, Push SW1 to change other Positions
- Each time the SW3 (UP) or SW4(DOWN) buttons are pressed the warning point will increase or decrease
- After 10 seconds press button again. The display will recover to current status automatically.

WIRING DESCRIPTION:

- BLACK – CONNECT TO A GOOD GROUND POINT IN THE VEHICLE
- WHITE – UNUSED
- GREEN – CONNECT TO TANK PRESSURE SENDER
- BLUE – CONNECT TO THE RIGHT- REAR PRESSURE SENDER
- BROWN – CONNECT TO THE LEFT- REAR PRESSURE SENDER

- ORANGE – CONNECT TO THE RIGHT-FRONT PRESSURE SENDER
- YELLOW – CONNECT TO THE LEFT- FRONT PRESSURE SENDER
- RED – POWER (DC+12V) CONNECT TO CAR KEY – ON ACC POSITION

AS-3 SENSOR SPECIFICATION:

1. Power supply voltage: DC12V
Wires color: Red: +12V, Black: Ground, White: Voltage Signal Output
2. Current consumption: 20mA
3. Output voltage: 650mV to 4500mV
4. Pressure range: 0-20 bar, (Max 300 PSI)
5. Accuracy resolution range: (±) 1PSI
6. Media compatibility: Clean, dry air & non-corrosive gases
7. Connector: 1/8"27 NPT Fitting, Connector color: Silver

DIGITAL GAUGE SPECIFICATION:

1. Reading signal: 650mV-4500mV
2. Supply Power: DC12V
3. Current consumption: Gauge 50mA Sender: 20mA @12V
4. Operating temperature: -20 to 80°C
5. Reading pressure range: 0-20bar, (Max 300 PSI)
6. Gauge accuracy resolution: (±)1psi
7. Backlight color: Blue

Caution: Cannot be used with any other senders other than those supplied.

Readings will not be correct.

MOUNTING

- The gauge requires a rectangular cut out that is about (93mm * 60mm (3.66"* 3.94"))
- It should be inserted into the opening from the front
- Insert the gauge. The back shell is fixed by four poles so that the gauge is secure
- The face of the gauge is 103mm * 63mm. (4.08"* 2.48")

FACTORY INSTALL VALUE

- When connecting to the Battery without sensors, the digital gauge will sound for 10 seconds
- The initial warning is 1 psi on the bottom limit. 300 psi on the upper limit.
- Without sensors connected, each digit of panel will display "-----"
- If Gauge flashes constantly, warning limits are not set properly or vehicle connected to improper air pressure

CT-300 WIRING DIAGRAM

WIRING DESCRIPTION:

- BLACK- GND
- GREEN-TANK SENSOR
- BLUE-RIGHT REAR SENSOR
- BROWN-LEFT REAR SENSOR
- DRANGE- RIGHT FRONSENSOR
- YELLOW-LEFT FRONT SENSOR
- RED- DC(+12V) ACC DN

